



FEATURES

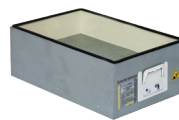
- VariColour filter blocked warning system
- Highest grade HEPA and carbon technology
- Automatic electronic flow control - maintains a constant extraction rate even as the filter blocks
- Quiet in operation
- Simple to install and easy to relocate

SPECIFICATIONS

| | | |
|--------------------|----------------|----------------|
| Voltage | 120v | 230v |
| Part Number | 0AL4107 | 0AL4104 |
| Wattage | 0.26kW | 0.25kW |
| Frequency | 50Hz / 60Hz | 50Hz / 60Hz |
| Cabinet Height | 705mm | 705mm |
| Cabinet Width | 707mm | 707mm |
| Cabinet Depth | 691mm | 691mm |
| Cabinet Weight | 80kg | 80 kg |
| Sound Level | <60dBa | <60dBa |
| Airflow | 400m3/h | 400m3/h |

INCLUDED AS STANDARD...

FILTERS



Main Filter
Code
110545

Description
HEPA/Chemical



Pre-filter
Code
111108

Description
F8/F9 Labyrinth

Find out more:

 www.purex.co.uk

 purex@purex.co.uk

 **+44 (0)1405 746030**

CONNECTION KIT

*Connection kit is included
see overleaf for options*

OPTIONS

Main Filter

Code:
113585

Description:
HEPA/Chemical Special

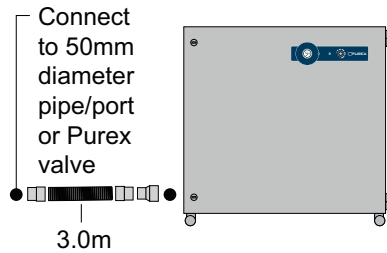
Connection Kits

Hose End
Diameter

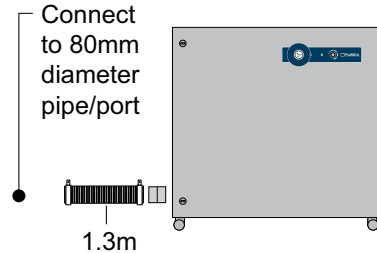
Hose
Length

Purex Inlet
Diameter

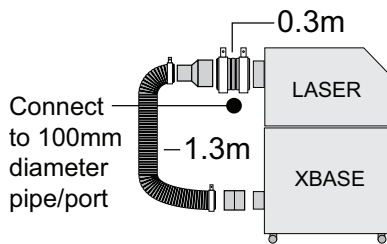
Code: 100032 **50mm** **3m** **80mm**



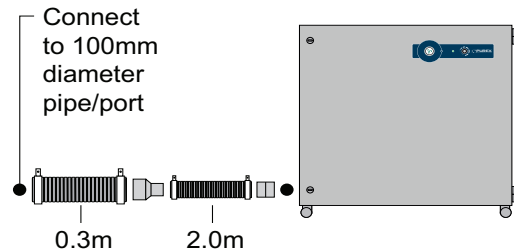
Code: 120293 **80mm** **1.3m** **80mm**



Code: 120292 **100mm** **1.6m** **80mm**

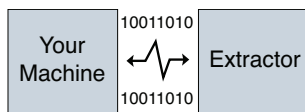


Code: 120288 **100mm** **2.3m** **80mm**



If you do not see a connection kit that fits your machine or pipework, please contact Purex or your representative

Interfacing



Interfacing can remotely start the Purex machine when the connected machine starts.

Interfacing can also warn the connected machine when the Purex machine is in alarm.

Take a look through our Interfacing Guide to see our extensive range of options



Purex International Limited
QWP House, Island Drive
Capitol Park, Thorne
Doncaster, UK
DN8 5UE